

SLIDER

Mount for binoculars with tripod

Art. No. 4964180
4964185



GB Visit our website via the following QR code or web link to find more information about this product or the available translations of this manual.

EN Visit our website via the following QR code or web link to find more information about this product or the available translations of this manual.

FR Si vous souhaitez obtenir plus d'informations concernant ce produit ou rechercher ce mode d'emploi en d'autres langues, rendez-vous sur notre site Internet en utilisant le code QR ou le lien correspondant.

NL Bezoek onze internetpagina via de volgende QR-code of weblink, voor meer informatie over dit product of de beschikbare vertalingen van deze gebruiksaanwijzing.

ES ¿Desearía recibir unas instrucciones de uso completas sobre este producto en un idioma determinado? Entonces visite nuestra página web utilizando el siguiente enlace (código QR) para ver las versiones disponibles.

IT Desidera ricevere informazioni esaustive su questo prodotto in una lingua specifica? Venga a visitare il nostro sito Web al seguente link (codice QR Code) per conoscere le versioni disponibili.



www.bresser.de/P4964180



www.bresser.de/P4964185



GARANTIE · WARRANTY · GARANTÍA · GARANZIA



www.bresser.de/warranty_terms

RECYCLAGE (TRIMAN/FRANCE)



Points de collecte sur www.quefairedesdechets.fr
Privilégiez la réparation ou le don de votre appareil !

FIG. 1

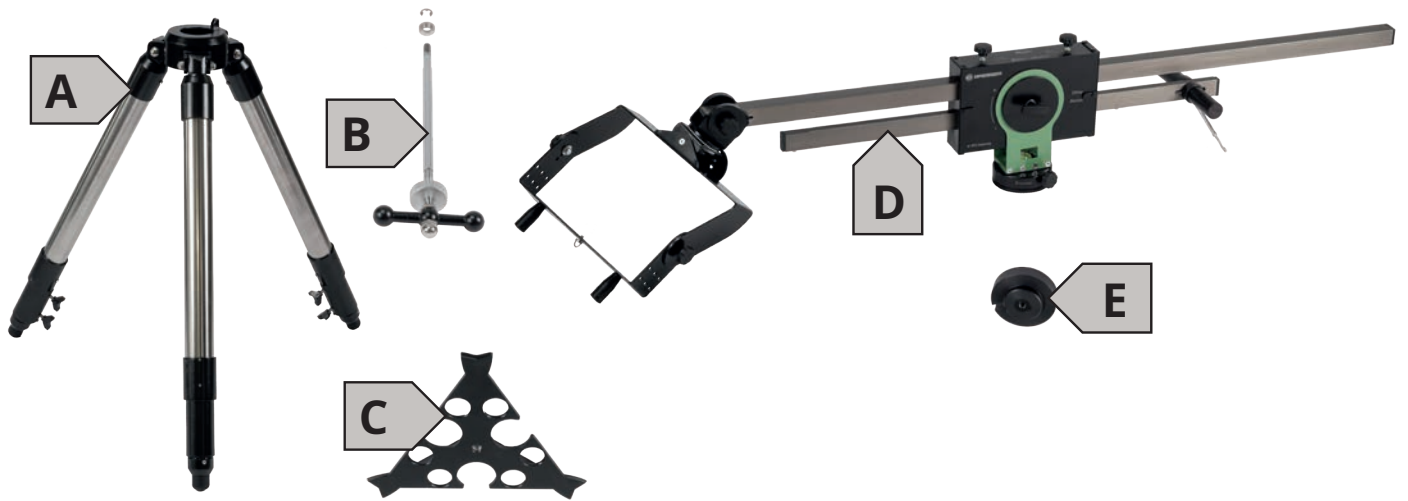
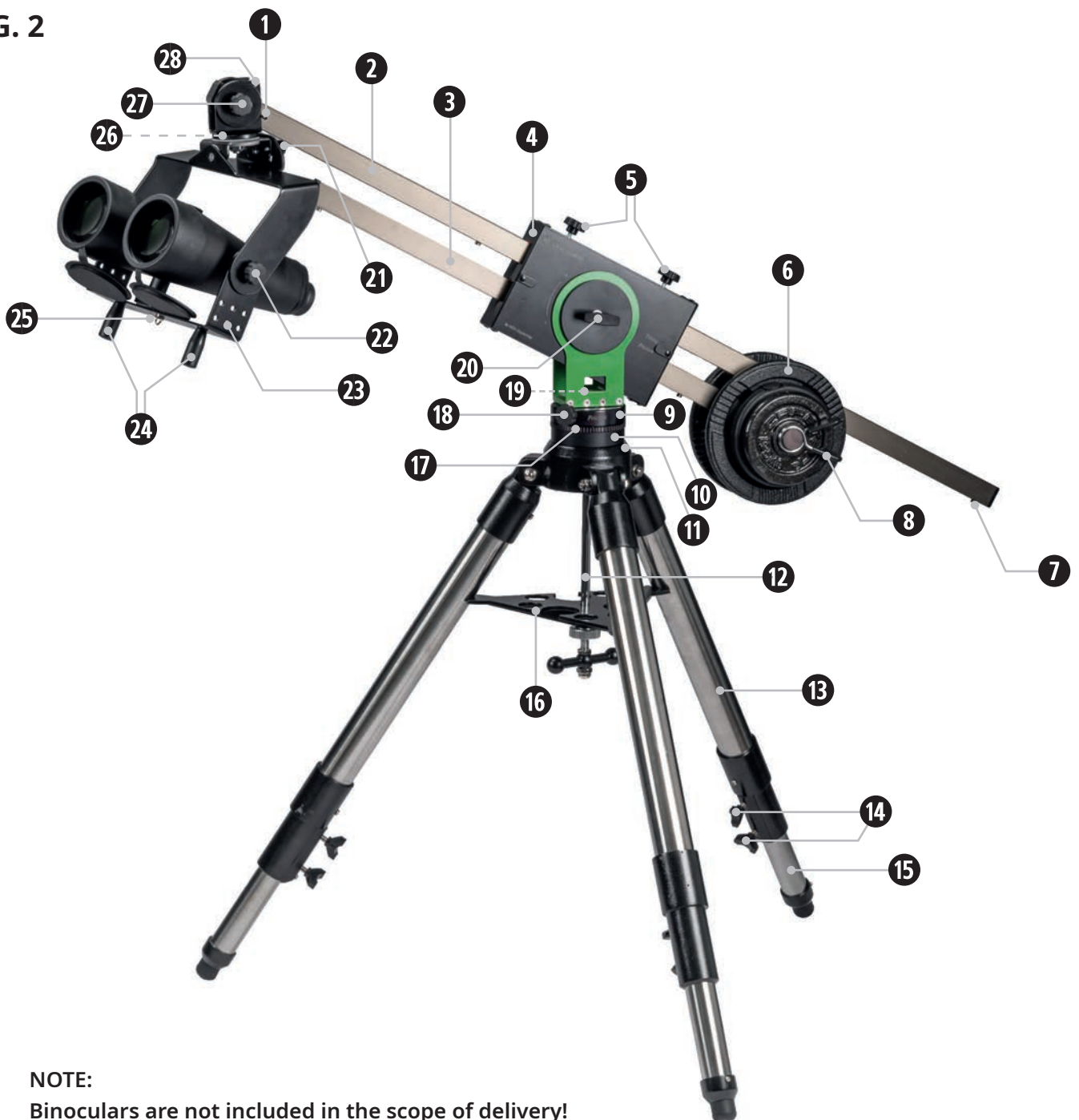


FIG. 2



NOTE:
Binoculars are not included in the scope of delivery!

INHALT

FIG. 13

FIG. 23

IMPRESSUM5

GÜLTIGKEITSHINWEIS5

FEATURES5

ZU DIESER ANLEITUNG5

ALLGEMEINE SICHERHEITSHINWEISE5

1. LIEFERUMFANG (FIG. 1)5

2. TEILEÜBERSICHT (FIG. 2)6

3. BEVOR SIE STARTEN6

4. MONTAGE6

4.1. STATIV AUFSTELLEN6

4.2. MONTIERUNG AUF STATIV MONTIEREN7

5. STATIV NEVILLIEREN7

5. GRUNDPOSITION HERSTELLEN7

7. FERNGLAS MONTIEREN8

8. MONTIERUNG AUSBALANCIEREN8

8.1. AUSBALANCIEREN MITTELS GEGENGEWICHT(EN)8

8.2. AUSBALANCIEREN MITTELS SANDSACK* (OPTIONAL)8

9. FRIKTIONSEINSTELLUNGEN9

10. ANWENDUNG/BOBACHTUNG9

10.1. BOBACHTUNG IN DER ZENITSTELLUNG9

11.1. UNIVERSELLE MONTAGEVORRICHTUNG10

11.2. DIVERSE HALTERUNGEN10

**12. REINIGUNG, WARTUNG
& LAGERUNG10**

13. TECHNISCHE DATEN10

MONTIERUNG10

STATIV10

14. ENTSORGUNG10

15. GARANTIE10

IMPRINT

Bresser GmbH

Gutenbergstr. 2 46414 Rhede Germany www.bresser.de

In case of a warranty or service request, please read the information under "Warranty" and "Service" in this documentation. We ask for your understanding that unsolicited returns cannot be processed.

Errors and technical changes are reserved.

© 2022 Bresser GmbH.

All rights reserved.

The reproduction of this documentation - also in extracts - in any form (e.g. photocopy, print etc.) as well as the use and distribution by means of electronic systems (e.g. image file, website etc.) requires the prior written consent of the manufacturer.

The designations and brand names of the respective companies used in this documentation are generally protected by trade, trademark and/or patent law in Germany, the European Union and/or other countries.

VALIDITY NOTE

This documentation is valid for the products with the following part numbers: 4964180, 4964185

Version: 1222

Description:

Manual_4964180-4964185_Slider-Mount_BRESSER_v122022a

Have this information available when enquiring service.

FEATURES

- New mount for binoculars, night vision devices, monoculars and spotting scopes
- Easy mounting on tripods with 3/8" connection thread
- Enables comfortable and fatigue-free observation
- Almost limitless rotation and swivelling gimbal mount head

ABOUT THIS INSTRUCTION MANUAL

NOTE

These operating instructions are to be regarded as part of the device.

Read the safety instructions and the operating instructions carefully before using this device. Keep these instruction manual in a safe place for future reference. If the device is sold or passed on, the instruction manual must be handed over to the new owner/user of the product.

GENERAL SAFETY INSTRUCTIONS

⚠ DANGER OF INJURY!

Never look directly into or near the sun with an optical device (e.g. binoculars) if it is not equipped with an appropriate solar filter! Unprotected looking into the sun can result in severe injuries of the eyes up to

complete blindness after only a few seconds.

This product consists of various moving elements. Proceed with extreme caution during assembly! Improper assembly or handling can cause injuries such as crushing.

⚠ DANGER OF MATERIAL DAMAGE!

Assemble the individual product components according to the assembly and setup steps in these instructions.

Especially when balancing and adjusting friction, be sure to secure the mount to prevent it from turning over. The mounted binoculars can be damaged by this!

The manufacturer accepts no liability for damage to property resulting from insufficiently safe installation or improper handling!

Always ensure a secure footing and proper balance to avoid tipping over.

• Keep children and animals away from the device! You could knock it over.

! IMPORTANT NOTES!

Do not make any changes to the construction!

Only carry out cleaning and maintenance work as described in these instructions!

The manufacturer accepts no liability for material damage resulting from improper handling, cleaning or maintenance or unauthorised intervention!

In the event of a defect, please contact your dealer. This person will contact the service centre and, if necessary, arrange for repair or replacement of the device.

1. SCOPE OF DELIVERY (FIG. 1)

A Metal tube stand (1x) (only with Art. 4964185)

B Central screw (1x) with
 Threaded rod (a) (1x)
 Head nut (b) (1x)
 Wing screw (c) (1x)
 Clamping screw (d) (1x)
 Spacer ring (e) (1x)
 C-Clip (f) (1x)

C Spreading plate (1x)

D mount (1x)

E Adapter plate (1x)

2. PARTS OVERVIEW (FIG. 2)

- ① Locking bolt
- ② Upper guide rail
- ③ Lower guide rail
- ④ Mounting head
- ⑤ Friction screws (guide rails)
- ⑥ Counterweights
- ⑦ Stop bolt (at each rail end, 4 ins.)
- ⑧ Fuse terminals (both sides)
- ⑨ Mounting shaft
- ⑩ Adapter plate with recess (a)
- ⑪ Tripod head with drill hole (a) and pin (b)
- ⑫ Central screw with threaded rod (a), cap nut (b),

wing screw (c), clamping screw (d), spacer ring (e) and C-clip (f)

- 13 Upper tripod leg section
- 14 Locking screws
- 15 Lower tripod leg section
- 16 Spreader plate
- 17 Toothed ring
- 18 Friction screw (horizontal movement of the mount)
- 19 Circular level
- 20 Friction screw (for the height movement of the mount)
- 21 Friction screws (lateral tilting movement of the bracket).
- 22 Friction screws (both sides, up/down movement of the bracket).
- 23 Drill holes (accessory mounting)
- 24 Guide handles
- 25 Fixing screw (1/4")
- 26 Friction screw (lateral movement of the bracket)
- 27 friction screw (zenith movement of the bracket)
- 28 Notch for locking device

3. BEFORE YOU START

- The slider mount can be used with any tripod that meets the technical requirements (see "Technical Data"). For optimal use, we recommend the use of the BRESSER ST3 tripod (Art.No. 0114310).
- Check the individual components carefully for completeness before assembly.
- We recommend that initial assembly be performed indoors to familiarize yourself with the features of this product.
- Due to production conditions, certain accessories may be included in the package individually or already pre-assembled.

4. ASSEMBLING

ATTENTION!

The slider mount is extremely agile and smooth. Especially for the initial assembly, we therefore strongly recommend that this be carried out together with a second person!

Remove the accessories from the packaging and spread them out on the floor to keep them handy for further use.

4.1. TRIPOD SET UP

The steps in this section refer to the assembly and preparation of a BRESSER ST3 tripod for use as a base for the slider mount.

NOTE:

Depending on the model purchased, the ST3 stand is already included in the scope of delivery or available as an optional accessory (see "Optional accessories").

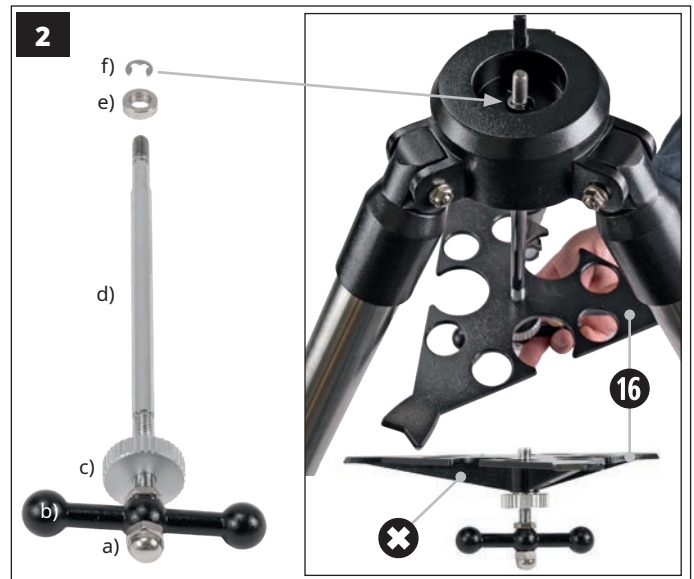


STEP 1:

1. Spread the tripod legs and place the tripod on a solid surface.
2. Loosen the locking screws (14) on the stand legs one after the other and extend the stand leg parts (13 + 15) to the desired length.

IMPORTANT!

When extending the tripod legs, take into account your later (sitting) position under the mount in relation to your body height.



STEP 2:

1. Turn the clamping screw (c) of the central screw (d) all the way down.
2. Place the spreader plate (16) on the threaded rod (d) from above.

IMPORTANT!

Make sure that the struts (X) of the spreader plate point to the floor.

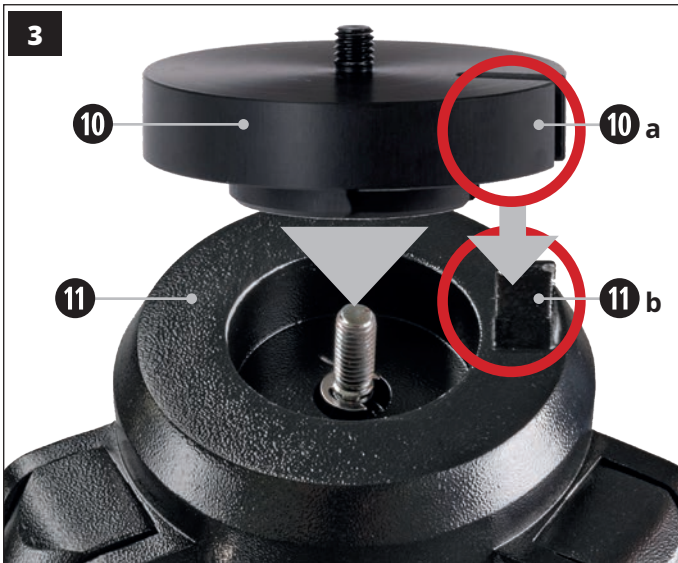
3. Slide the spacer ring (e) onto the central screw.
4. Insert the central screw together with the spreader from below through the hole in the tripod head and secure it from above with the C-clip (f).

4.2. MOUNT ONTO THE TRIPOD

The steps in this section refer to mounting the slider mount onto a BRESSER ST3 tripod (part no. 0114310).

Note:

When using a different tripod, additional or different adaptors may be required for mounting. Bear in mind the technical requirements (see "Technical data").



STEP THREE:

1. Insert the adapter plate (10) into the stand head (11) so that the pin (11b) on the stand head engages in the side recess (10a) of the adapter plate.
2. Screw the central screw (12) into the lower threaded receptacle of the adapter plate using the thumbscrew (12c) so that it is firmly connected to the stand.



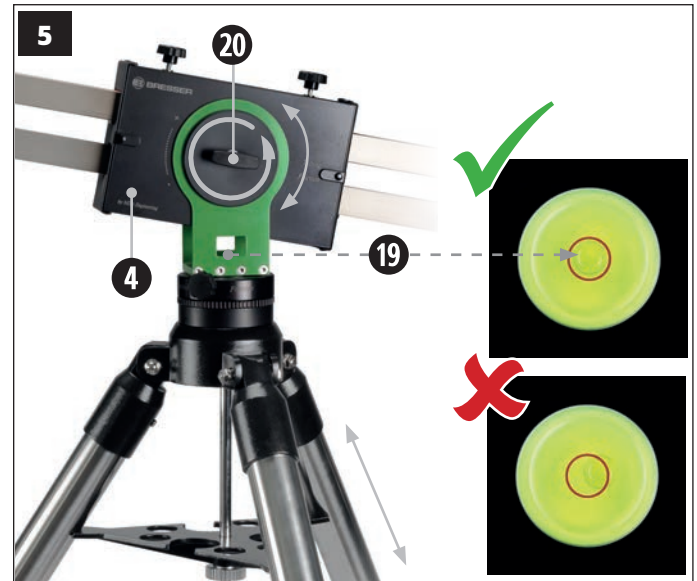
STEP 4:

1. Insert the slider mount with the threaded screw on the mount shaft (9) first into the upper threaded receptacle of the spacer plate (11) on the tripod head (10).
2. Screw the mounting shaft and the spacer plate together by turning the toothed ring (17).

5. TRIPOD LEVELING

Note:

Leveling the mount is elementary so that the subsequent assembly and setup steps can be performed correctly.



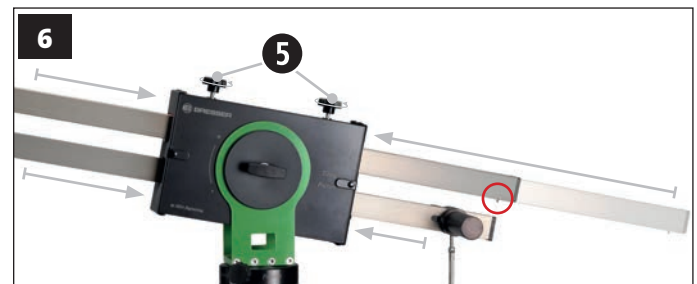
STEP 5:

1. Bring the entire construction of tripod and mount into a perfectly horizontal position.
2. If necessary, adjust the length of the tripod legs (see step 1).

Note:

As soon as the air bubble of the circular level (19) is centered in the ring mark, the stand is optimally positioned.

5. ESTABLISH THE BASIC POSITION



STEP 6:

IMPORTANT!

Never completely unscrew the friction screws !

1. Loosen the friction screws (5) until the guide rails (2+3) can be moved back and forth without great resistance.
2. Carefully loosen the friction screw (20) with one hand and bring the mounting head (4) into a horizontal position with the other hand. Tighten the friction screw so that the mounting head can no longer move on its own.
3. Push the guide rails (2+3) together from both sides up to the stop bolts (7). Tighten the friction screws (5) with feeling so that the rails can no longer move on their own.

7. MOUNT BINOCULARS

ATTENTION!

As long as the slider mount is not fully balanced, there is a risk of the mount flipping over. Therefore, care should be taken especially when mounting the binoculars: Always hold the mount with one hand!

Note:

For mounting the binoculars, they must be equipped with a tripod connection. An additional tripod adapter* and/or adapter plate* with 1/4" connection thread is usually required.



STEP 7:

Centre the binoculars with the mounted adaptor(s) on the 1/4" mounting screw.

Screw the mounting screw into the 1/4" connection thread of the binocular adapter from below so that the binoculars are mounted firmly and without wobbling on the mount.

The illustration shows possible mounting types with various tripod connection adaptors*.

8. MOUNT BALANCING

ATTENTION!

As long as the slider mount is not fully balanced, there is a risk of the mount flipping over. Therefore, especially when mounting the binoculars, you should be careful: Always hold the mount with one hand!

Note:

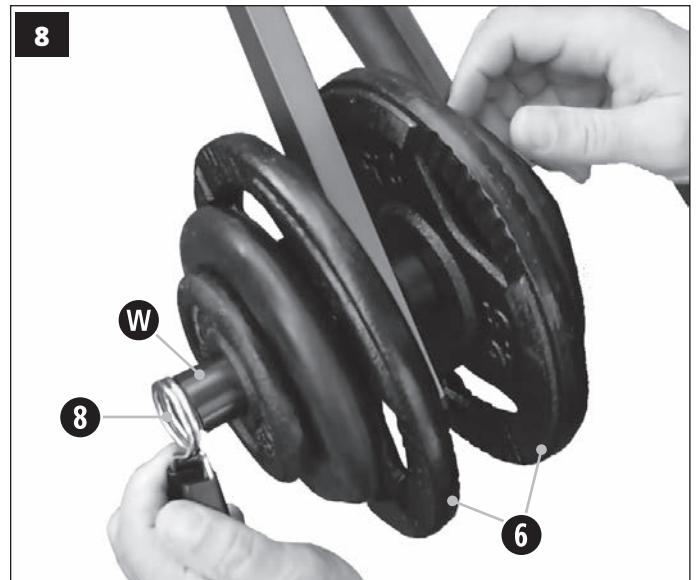
When using very light binoculars, no counterbalance at all may be required for balancing.

Balancing should be done carefully and gradually until the binoculars and balance weight(s) are in balance.

8.1. BALANCING BY MEANS OF COUNTERWEIGHT(S)

Note:

The mounting of the counterweights should be done according to the balance principle and step by step until a balance between the binoculars and the counterweights is achieved.



STEP 8:

1. Step by step, attach the counterweights (6) to both sides of the locating pin (W).
2. Slide the safety clamps (8) onto the locating pin on both sides to prevent the counterweights from slipping off.

ATTENTION!

The fuse clamps must always be properly mounted on the retaining bolts when using the SLIDER mount. Otherwise, falling counterweights can cause injuries.

8.2. BALANCING BY MEANS OF A SANDBAG* (OPTIONAL)

ATTENTION!

When using stones, make sure that they do not have any sharp edges or points that could damage the sandbag!

Note:

The attachment of a sandbag is optional or additional to the counterweights.

The assembly of the sandbag should be done according to the balance principle and with a gradual filling until a balance between the binoculars and the sandbag is achieved as far as possible.

The sandbag can be optionally filled with sand* or/ and stones* to give it the desired weight.

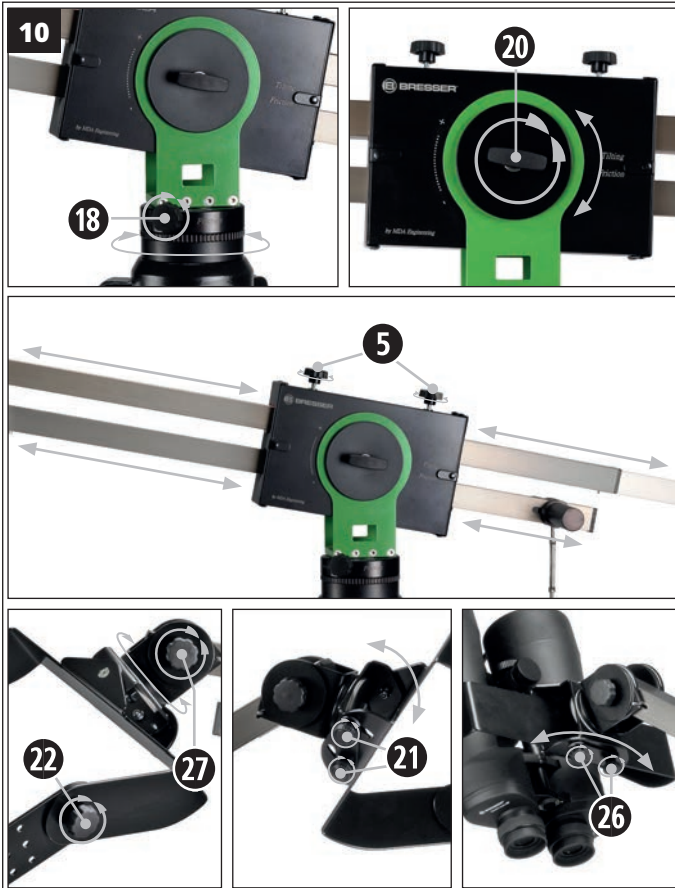


STEP 9:

1. Fill the sandbag* (S) with a suitable amount of sand* or/and stones* and close the sandbag tightly.
2. Hook the sandbag with the loop into the hook (H) on the pick-up bolt (W).

9. FRICTION SETTINGS

The Slider mount is equipped with various friction screws, which can be used to individually adjust the mobility of the rails, hinges and axes.

**STEP 10:**

1. Turn the friction screw (18) clockwise or counterclockwise to adjust the mobility for horizontal movement.
2. Turn the friction screw (20) clockwise (+) or counterclockwise (-) to adjust the mobility for the elevation movement of the mount.
3. Turn the friction screws (5) clockwise or counterclockwise to adjust the mobility for the two guide rails.
4. Turn the friction screw (27) clockwise or counterclockwise to adjust the mobility for the zenith movement of the holder.
5. Turn the friction screws (22) clockwise or counterclockwise to adjust the mobility for the upward and downward movement of the holder.
6. Turn the friction screws (21) clockwise or counterclockwise to adjust the mobility for the lateral tilting movement of the holder.
7. Turn the friction screws (26) clockwise or

counterclockwise to adjust the mobility for lateral movement of the holder.

10. APPLICATION/OBSERVATION

The Slider mount offers maximum flexibility for your observations thanks to its unique design. The use of slip clutches allows the gimbal to be moved extremely smoothly and quickly in almost any direction.

ATTENTION!

During your observations, always use the two guide handles (24) to move the mount with the inserted binoculars to the desired position. Never hold firmly the binoculars to move them!

Note:

It is recommended to adopt a body posture that can be easily maintained over a longer period of time for relaxed observation.

The use of an armchair-like chair with a high back that can be moved laterally and in the back area is advantageous (e.g. gaming chair).

10.1. OBSERVATION IN THE CENTRE

The Slider mount is equipped with a simple mechanism for locking the holder. This allows the mount to be locked in a position that is advantageous for zenith observation.

**STEP 11:**

1. Press the locking bolt (1) in the direction of the mounting head (4) and hold it in place.
2. Turn the suspension of the holder so that the notch (28) is located in front of the locking bolt.
3. Release the locking pin so that it slips into the notch. The suspension of the bracket is now fixed in position.
4. To release the lock, hold the holder and press the locking bolt in the direction of the mounting head.
5. Turn the suspension of the holder so that the notch is no longer in front of the locking bolt. Release the locking bolt. The locking mechanism is released.

Tip:

For an illustrative presentation of various setting and usage options, we also recommend our product video, which can be accessed via the following link.



www.bresser.de/P4964185

11. OPTIONAL ACCESSORIES

11.1. UNIVERSAL MOUNTING DEVICE



The bracket of the slider mount is equipped with several drill holes on the side. A wide range of accessories* can be screwed on via this. Figure 12 shows a smartphone holder* (left) and a mechanical viewfinder* (right).

11.2. VARIOUS BRACKETS

Art. No. 4910300

BRESSER Smartphone holder

12. CLEANING, MAINTENANCE & STORAGE

Only clean the outside of the mount with a dry to maximally damp, non-abrasive cleaning cloth (e.g. microfiber).

Regularly lubricate the runners and hinges with a little petroleum jelly.

Allow the mount to acclimatise for some time in a normal temperature room after outdoor use. If the mount has come into contact with moisture, first rub it dry with a non-scratching cloth.

Cover the mount and store it in a dry and dust-free place if it will not be used for a long time.

13. TECHNICAL DATA


ASSEMBLY

Model name	Slider mount with binocular holder
Item number	4964180 / 4964185
Dimensions	1250x350x280 mm
Weight	6.0 kg
Material	Aluminum / Steel

TRIPOD

Model name	Tripod steel tube tripod
Item number	0114310
Dimensions	850x200x200 mm
Weight	5.5 kg
Material	Stainless steel / Cast iron

14. DISPOSAL

 Dispose of packaging materials according to type. Contact your local waste disposal company or the Environmental Protection Agency for more information on proper disposal.

15. WARRANTY

The regular guarantee period is 2 years and begins on the day of purchase. To benefit from an extended voluntary guarantee period as stated on the gift box, registration on our website is required.

The complete warranty terms and conditions as well as information on warranty extension and services can be viewed at:



www.bresser.de/warranty_terms

Service

DE AT CH BE

Bei Fragen zum Produkt und eventuellen Reklamationen nehmen Sie bitte zunächst mit dem Service-Center Kontakt auf, vorzugsweise per E-Mail.

E-Mail: service@bresser.de
Telefon*: +49 28 72 80 74 210

BRESSER GmbH

Kundenservice
Gutenbergstr. 2
46414 Rhede
Deutschland

*Lokale Rufnummer in Deutschland (Die Höhe der Gebühren je Telefonat ist abhängig vom Tarif Ihres Telefonanbieters); Anrufe aus dem Ausland sind mit höheren Kosten verbunden.

GB IE

Please contact the service centre first for any questions regarding the product or claims, preferably by e-mail.

E-Mail: service@bresseruk.com
Telephone*: +44 1342 837 098

BRESSER UK Ltd.

Suite 3G, Eden House
Enterprise Way
Edenbridge, Kent TN8 6HF
Great Britain

*Number charged at local rates in the UK (the amount you will be charged per phone call will depend on the tariff of your phone provider); calls from abroad will involve higher costs.

FR BE

Si vous avez des questions concernant ce produit ou en cas de réclamations, veuillez prendre contact avec notre centre de services (de préférence via e-mail).

E-Mail: sav@bresser.fr
Téléphone*: 00 800 6343 7000

BRESSER France SARL

Pôle d'Activités de Nicopolis
314 Avenue des Chênes Verts
83170 Brignoles
France

*Prix d'un appel local depuis la France ou Belgique

NL BE

Als u met betrekking tot het product vragen of eventuele klachten heeft kunt u contact opnemen met het service centrum (bij voorkeur per e-mail).

E-Mail: info@bresserbenelux.nl
Telefoon*: +31 528 23 24 76

BRESSER Benelux

Smirnoffstraat 8
7903 AX Hoogeveen
The Netherlands

*Het telefoonnummer wordt in het Nederland tegen lokaal tarief in rekening gebracht. Het bedrag dat u per gesprek in rekening gebracht zal worden, is afhankelijk van het tarief van uw telefoon provider; gesprekken vanuit het buitenland zullen hogere kosten met zich meebrengen.

ES PT

Si desea formular alguna pregunta sobre el producto o alguna eventual reclamación, le rogamos que se ponga en contacto con el centro de servicio técnico (de preferencia por e-mail).

E-Mail: servicio.iberia@bresser-iberia.es
Teléfono*: +34 91 67972 69

BRESSER Iberia SLU

c/Valdemorillo,1 Nave B
P.I. Ventorro del Cano
28925 Alcorcón Madrid
España

*Número local de España (el importe de cada llamada telefónica dependen de las tarifas de los distribuidores); Las llamadas des del extranjero están ligadas a costes suplementarios..

Bresser GmbH
Gutenbergstr. 2
46414 Rhede · Germany
www.bresser.de

   @BresserEurope

